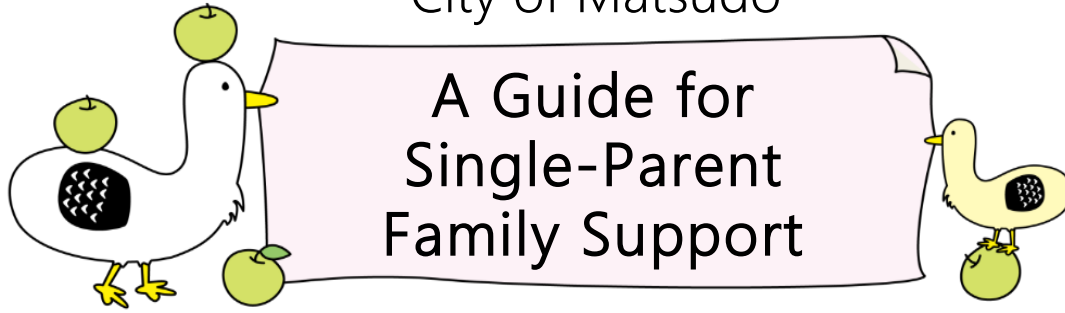


City of Matsudo



A Guide for Single-Parent Family Support

Types of Allowances and How to Apply

<p>① Child Rearing Allowance <i>"Jido Fuyo Teate"</i></p> <p>This allowance is provided to single-parent households with a child (until the end of the first March after turning 18 years old). There is an income limit for potential aid. [Contact] Family Assistance Div. Family Assistance Allowance Office 047-366-3127</p>	<p>② Childcare Allowance <i>"Jido Teate"</i></p> <p>This allowance is provided to those raising a child (who has yet to complete their final year of junior high school). There is an income limit for potential aid. [Contact] Family Assistance Div. Family Assistance Allowance Office 047-366-3127</p>
<p>③ Medical Financial Aid in Single-Parent Households <i>"Hitori-oya Iryohi Josei"</i></p> <p>This aid subsidizes part of the medical expenses of single-parent households with a child (until the end of the first March after turning 18 years old). There is an income limit for potential aid. [Contact] Family Assistance Div. Family Assistance Allowance Office 047-366-3127</p>	<p>④ Medical Expense Subsidy System for Children <i>"Kodomo Iryohi Josei"</i></p> <p>Medical expenses are partially or fully subsidized for the children (until the end of the first March after turning 18 years old). [Contact] Family Assistance Div. Family Assistance Allowance Office 047-366-3127</p>
<p>⑤ Loan for Single Mothers/Fathers and the Widow(er) Welfare Fund <i>"Boshi/Fushi/Kafu Fukushi Shikin Kashitsuke"</i></p> <p>We offer consultations to earn loans (children's schooling funds, etc.) that would assist with the stable living situations of single-parent families. [Contact] Family Assistance Div. 047-366-7347</p>	<p>⑥ Orphan Support <i>"Iji Teate"</i></p> <p>This financial aid is provided to those who are raising a child whose mother and/or father has passed away and whose junior-high school education has yet to be completed. There is an income limit for potential aid. [Contact] Family Assistance Div. Family Assistance Allowance Office 047-366-3127</p>
<p>⑦ Tax <i>"Zeikin"</i></p> <p>Single parents with children living in the same household may be eligible for the single-parent tax exemption, depending on their income situation. Please contact the Resident Taxation Div. for the detail. [Contact] Resident Taxation Div. 047-366-7322</p>	<p>⑧ National Health Insurance <i>"Kokumin Kenko Hoken"</i></p> <p>Depending on the individual's living situation (i.e. employment situation, etc.) you may need to switch your health insurance quickly. Please contact the division below. [Contact] National Health Insurance Call Center 047-712-0141</p>
<p>⑨ National Survivor's Basic Pension <i>"Izoku Kiso Nenkin"</i></p> <p>When <u>A: an insured person of the National Pension System</u> or <u>B: a person who has contributed to their insurance for over 25 years</u> dies, their dependents (including their child-rearing spouse and children) are eligible to receive the deceased's pension payment up until the first March after the child reaches the age of 18. (Up to 20 if the child has a 1st/2nd degree disability). [Contact] National Health Insurance & Pension Div. (National Pension Unit) 047-366-7352</p>	<p>⑩ School Expense Allowance System <i>"Shugaku Enjo-hi"</i></p> <p>This allowance is provided to those who are 1) parents/guardians of a public elementary school or junior-high school student and 2) receiving Child Rearing Allowance etc. ※ There is a similar system for children in high schools. Please inquire at your respective high school for more details. [Contact] School Financial Affairs Div. 047-366-7460</p>

Housing and Other Daily Life Support

① Municipal / prefectural housing special treatment in the lottery

(Application forms available at Matsudo City Hall, Housing Policy Div. & branch offices)

○Municipal housing (Tenant recruitment 3times/year → Jun, Oct & Feb) [Contact] Housing Policy Div. 047-366-7366

○Prefectural housing (Tenant recruitment 4times/year → Apr, Jul, Oct & Jan)

[Contact] Chiba Housing Supply Corp., Application Div. 043-222-9200

② UR discount systems (Parenting/*Sono*-mama Discount and Living-Nearby Discount)

[Contact] UR Matsudo Office 047-367-5221

③ General housing information (Chiba Prefecture Project for Special Assistance in Securing Housing)

For those who are having difficulties in finding housing, we provide property information on private rental housing that does not exclude families with children as tenants.

[Contact] Housing Policy Div. 047-366-7366

④ Matsudo City subsidy for living-nearby/together housing

The city subsidizes a portion of the cost of acquiring a housing in the city for a family with children when it is for living close to or together with their parents living in the city (within the scope of the budget). For single-parent families, the area requirement for the house acquiring is eased. Contact the division in charge for more information.

[Contact] Housing Policy Div. 047-366-7366

⑤ Prefectural water fee payment deduction ... Equivalent to 8% of the water bill is deducted.

[Contact] Prefectural Water Bureau, Customer Center 0570-001-245

⑥ JR commuter pass discount ... Households receiving Child Rearing Allowance can purchase JR commuter passes with a 30% discount.

[Contact] Family Assistance Div. Family Assistance Allowance Office 047-366-3127

Employment Support

Professional counselors help single-parent families become self-reliant by developing programs to support the independence of mothers and fathers. There are also consultation services on the use of systems necessary for independence, as well as on finding employment, changing jobs, and acquiring certifications.

[Contact] Family Assistance Div. 047-366-7347

① Single-parent family employment promotion program

A system designed to promote independence and employment of the single parent. The city subsidizes up to 60% (with upper limit) of tuition costs for skill training courses, such as those pertaining to certified care workers, medical assistants, computer skills, etc.

② Advanced skill training promotion grant

The city provides grants to single parents while they are enrolled in a training institution and acquiring a license that is likely to lead to employment, such as nurse licenses, etc.

③ Support program for single parents to acquire a "Certificate for Students Achieving the Proficiency Level of Upper Secondary School Graduates"

The city subsidizes up to 100% (or 250,000yen maximum) of tuition costs for parents or children in single-parent households who take classes aiming to pass an exam to be certified that they have abilities equivalent to that of a high school graduate.

④ Single-parent family housing support loan program

A loan program that provides housing assistance loan to those who have drawn up a self-reliance support plan for mothers and fathers and meet the requirements.

Study Support

Study Support Program for children (5th graders to high school seniors)

The city provides learning support for children from single-parent families, etc. offering a safe and comfortable place for the children to spend time after school.

※Subject: Households receiving Child Rearing Allowance, School Expense Allowance, and/or Public Assistance.

[Contact] Family Assistance Div. 047-366-7347

Support for Families with Babies

① After birth of a baby

Postpartum Support Program

Families with children under 4 months old can request visits of a member who has completed a designated training course to receive assistance with childcare, housework, etc.

[Contact] Matsudo Family Support Center 047-330-2941

Postpartum Care Services (Overnight stays / Day stays / Visits)

For those who are feeling anxious about postnatal childcare, the city provides detailed support such as mental and physical care for mothers, infant care, and childcare support at postnatal care facilities or assistance visits, until the baby is 4 months old.

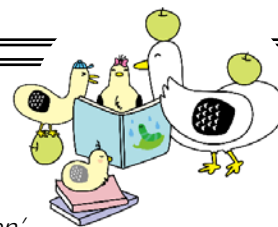
[Contact] Central Health and Welfare Center 047-366-7489

② Places for preschoolers and their parents (Child Support Centers / Oyako-DE-Hiroba)

Infants and toddlers aged from 0 to 3 years old and their guardians can casually gather and spend time together. A childcare coordinator is always available for consultation on childcare.

By adding Matsudo City official LINE account (ID: [@matsudo.city](#)), which provides childrearing information, and registering an Oyako-DE-Hiroba of your choice as "My Support Space", you will be able to regularly receive event and other notices for the said facility.

[Contact] Family Assistance Div. 047-366-7347



Child Care Services

① Regular child care (Preschoolers)

- Nursery Schools, Certified Center for Early Childhood Education & Care 'Kodomo-en'

From 57 days old until elementary school age

[Contact] Childcare Div. 047-366-7351

- Kindergartens ⇒ [Contact] Please call/visit your local kindergarten for inquiries.

② After-school Kids Club (1st to 6th graders)

Child care service for elementary school children whose guardian are not home during the daytime due to their work, etc. The monthly fee is 9,000 yen. There is also a reduction/exemption system, so please consult with the division in charge.

[Contact] Family Assistance Div. 047-366-7347

③ Family Support Center (from 4 month old up to 6th graders)

It is a membership organization in which people who want assistance with childcare or house chores (user member) can seek someone who offers help (support member) in their local community. Single-parent households are eligible for subsidies.

[Contact] Matsudo Family Support Center 047-330-2941

④ Short-term child care services at Hotto Rooms, etc. (preschoolers from 4 month old)

If guardians need child care for a short time in order to visit the hospital or to shop, etc., this service can look after their children for up to 4 hours.

[Contact] Family Assistance Div. 047-366-7347

⑤ Children's Short-stay (1 year old and above and below 18 years old)

A short-stay childcare service is available for when there is a need for temporary child care or overnight stays on Saturdays, Sundays, or National holidays

[Contact] 'Haruka-en' 047-315-2985, Children's Welfare Div. 047-366-3941

⑥ Child care service for sick and recovering children (From 57 days old up to 6th graders)

A childcare services for preschool children who cannot be taken care of in a group or at home because they are either in an acute sickness phase or in an immediate post-sickness recovery phase. Single-parent households are eligible for a subsidy.

[Contact] Family Assistance Div. 047-366-7347

Support for Single Parents and Divorcing Parents

Child support and visitation consultation is required in advance. Please contact us if you are considering using ① through ④ below.

[Contact] Family Assistance Div. 047-366-7347

① Subsidy for the notarial document fees	② Accompanying support
A subsidy to stipulate the amount of child support in a notarized document in order to assist in the continuous receipt of child support. Upper limit of 19,500 yen, no income limit.	The city's "Jiritsu Shien-in (mother/father and child self-reliance support staff)" will accompany to court, notary public offices, and other institutions to reduce anxiety.
③ Visitation support and lawyer consultation	④ Subsidy for child support guarantee fees
<ul style="list-style-type: none"> ● Professional counselors are available for consultations on visitation, and provide support for FPIC's visitation support program fees. (Up to 1 year) ● Lawyer consultations are available for difficult legal matters during divorce for free. 	A partial subsidy to support expenses when signing a guarantee contract with a child support guarantee company. (Only for the first year) Upper limit of 50,000 yen, no income limit.

Consultation Desks

Those marked "※" are national/prefectural institution

① Consultations for single-parent family regarding matters below

Living in general	Family Assistance Div.	047-366-7347
Employment	Family Assistance Div.	047-366-7347
Child support and visitations, etc.	Family Assistance Div.	047-366-7347
	Yoikuhi Soudan Shien Center ※	03-3980-4108

② Consultations regarding family relation and the children's matters

Child rearing in general (incl. pregnancy and child birth)	Oyako Sukoyaka Center (Health and Welfare Centers across the city)	047-366-7766 (Central) 047-346-6066 (Kogane) 047-384-8020 (Tokiwadaira)
Family matters in general (child-rearing, child abuse, consultation for households with children under 18 years of age)	Children and Family Affairs Center	047-366-3941
Children's education (choosing courses of education, absenteeism, etc.)	Student Consultation Div.	047-366-7600 (Appointment for a meeting)
Matters relating youth children (school, family issues, dealing with your children, etc.)	Tokiwadaira Children's Hall	047-384-7867 (Direct line for Family / education Counselors)
Women's matters (DV, divorce, etc.)	Children and Family Affairs Center	047-366-3955
Yuu Matsudo – 'Kokoro no Soudan' (life counseling, interpersonal relationship matters, etc.)	Gender Equality Div. (Gender Equality Center, Yu Matsudo)	047-363-0505
Women's problems (sheltering from DV, etc. women's concerns in general)	Prefectural Support Center for Women ※	043-206-8002 (Available 24/7)

③ Other consultations

Support for independence of the financially-disadvantaged (financial situation, employment, housing problem, etc., and living in general)	Self-Reliance Consultation Support Center	047-366-0077
Women's employment & work/home balance support (support for women's re-employment)	Gender Equality Div. (Gender Equality Center, Yu Matsudo)	047-366-8783
Employment while raising small children	Hello Work Matsudo – Mothers' Counter (Fathers also welcome) ※	047-367-8609 ext.43#

Please call the Family Assistance Division (047-366-7347) if you are unsure where to consult. A professional counselor will be available to talk with you.



"Matsu-Dori"
The mascot character
for family support in Matsudo